

Scaled data based on original data using

LM-41-14 Approved Method for Photometric Testing Of Indoor Fluorescent Luminaires

Test Report Prepared for

Cooper Lighting Solutions

(formerly Eaton)

Brand: CORELITE

Report Number: 26363

Luminaire Tested: **I2-WL-1T8-1C-UNV-04**

Issue Date: 3/3/2020

Test Information

Test Method: LM-41-14
Report Number: 26363
Test Lab: LIGHTING SCIENCES, INC.
Issue Date: 3/3/2020
Manufacturer: COOPER LIGHTING SOLUTIONS (FORMERLY EATON)
Product Line: CORELITE
Catalog Number: I2-WL-1T8-1C-UNV-04
Description: WITH WHITE INTERIOR AND FROSTED PLASTIC LENS

Light Source: ONE SYLVANIA 32 WATT T8 LAMP

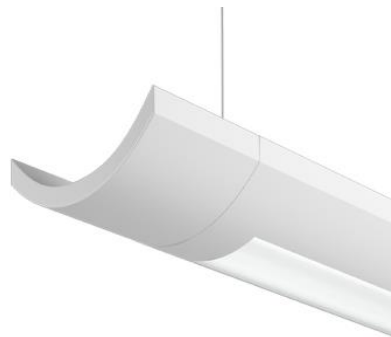
FO32/835/ECO. LUMEN RATING = 2950 LMS.

Ballast/Driver: -

Summary

Lumens per Lamp: 2950 (1 lamp)
Luminaire Lumens: 2877.1 lumens
Efficiency: 97.5%
Efficacy: 84.6 lumens/watt
Spacing Criteria (0/90/45): 1.22 / 1.35 / 1.39
Luminous Opening: Rectangular (W 0.31' x L: 3.67' x H: 0')
CIE Type: Semi-Indirect

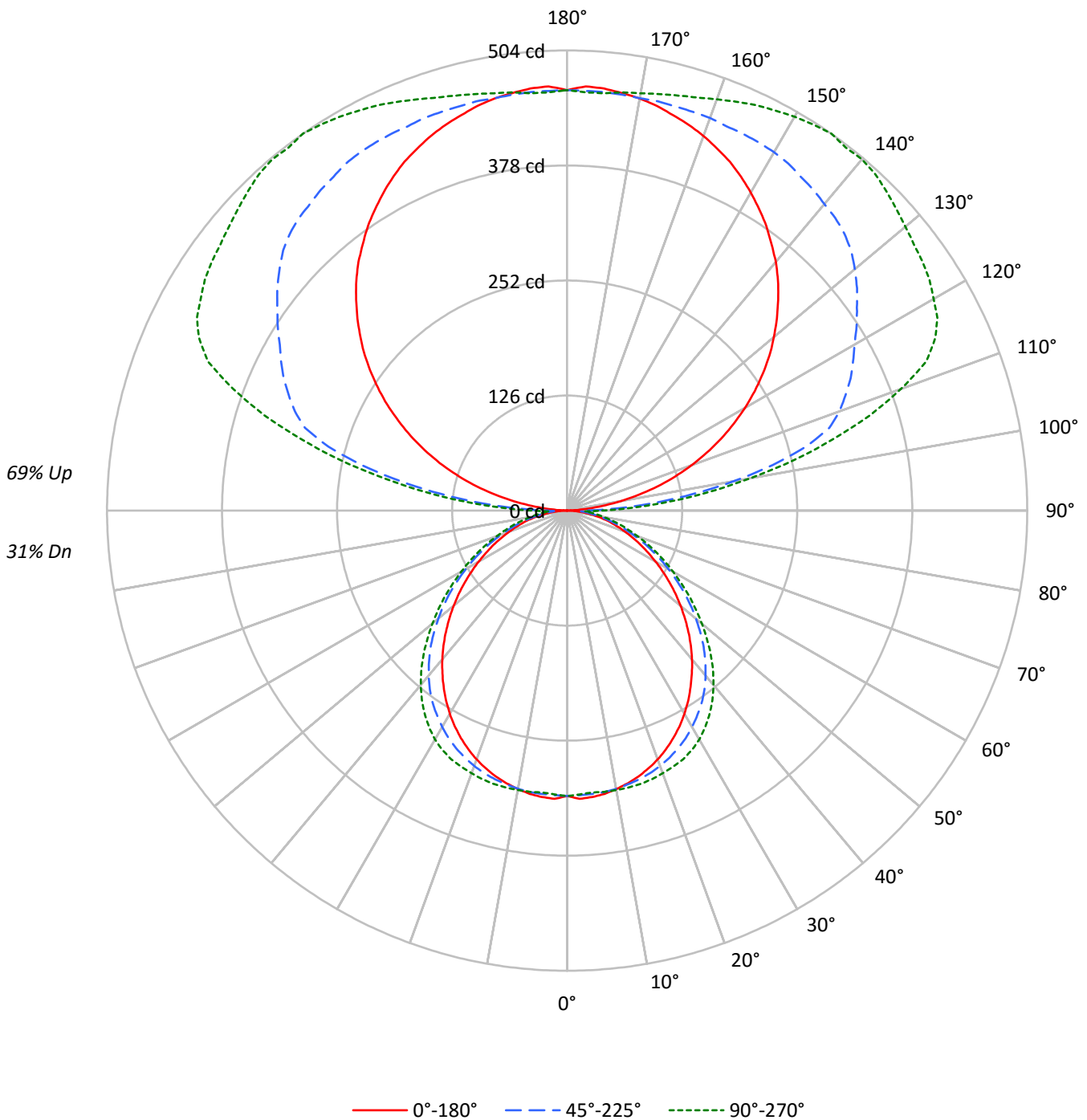
Input Watts (W): 34
Input Voltage (V): NR
Input Current (A_{in}): NR
Voltage Rise (V): NR
Power Factor: NR
Total Harmonic Distortion (THDi): NR
Frequency (hertz): 60
Stabilization Time: NR
Operation Time: NR
Ambient Temperature (°C): NR
Test Distance: 25 FT



TEST NUMBER: 26363

CATALOG NUMBER: I2-WL-1T8-1C-UNV-04

Luminous Intensity Polar Plot





TEST NUMBER: 26363

CATALOG NUMBER: I2-WL-1T8-1C-UNV-04

COEFFICIENT OF UTILIZATION - ZONAL CAVITY METHOD:

RF	20				20				20				20				20	
RC	80				70				50				30				10	0
RW	70	50	30	10	70	50	30	10	50	30	10	50	30	10	50	30	10	0
RCR																		
0	100	100	100	100	90	90	90	90	71	71	71	53	53	53	38	38	38	30
1	91	87	83	80	82	78	75	72	62	60	58	47	45	44	33	32	31	25
2	83	76	70	65	74	68	63	59	54	51	48	41	39	37	29	28	26	21
3	76	67	60	54	68	60	54	49	48	43	40	36	33	31	26	24	22	18
4	69	59	51	46	62	53	47	42	42	38	34	32	29	27	23	21	19	15
5	63	52	45	39	57	47	41	36	38	33	29	29	25	23	21	18	17	13
6	58	47	39	34	52	42	36	31	34	29	25	26	23	20	19	16	15	12
7	54	42	34	29	48	38	32	27	31	26	22	24	20	18	17	15	13	10
8	50	38	31	26	44	34	28	24	28	23	20	21	18	16	16	13	12	9
9	46	35	27	23	41	31	25	21	25	21	17	20	16	14	14	12	10	8
10	43	32	25	20	39	29	23	19	23	19	16	18	15	12	13	11	9	7

AVERAGE LUMINANCE (cd/sqm):

	0°	45°	90°
0°	2958	2958	2958
5°	2991	2959	2943
10°	2975	2972	2986
15°	2953	2984	3036
20°	2920	2996	3083
25°	2871	3000	3137
30°	2808	2990	3163
35°	2723	2968	3140
40°	2627	2914	3080
45°	2513	2830	2976
50°	2387	2710	2835
55°	2253	2578	2689
60°	2117	2426	2534
65°	1988	2277	2404
70°	1870	2124	2274
75°	1769	1996	2204
80°	1629	1918	2228
85°	1357	2193	2822



TEST NUMBER: 26363

CATALOG NUMBER: I2-WL-1T8-1C-UNV-04

ZONAL LUMENS:

Zone	Lumens	% Fixture	% Lamp
0°-10°	29.7	1.0	1.0
10°-20°	86.2	3.0	2.9
20°-30°	132.6	4.6	4.5
30°-40°	159.6	5.5	5.4
40°-50°	160.3	5.6	5.4
50°-60°	136.8	4.8	4.6
60°-70°	99.0	3.4	3.4
70°-80°	57.5	2.0	1.9
80°-90°	23.6	0.8	0.8
90°-100°	95.8	3.3	3.2
100°-110°	246.4	8.6	8.4
110°-120°	325.5	11.3	11.0
120°-130°	339.0	11.8	11.5
130°-140°	323.1	11.2	11.0
140°-150°	277.9	9.7	9.4
150°-160°	210.3	7.3	7.1
160°-170°	129.8	4.5	4.4
170°-180°	43.9	1.5	1.5
0°-30°	248.6	8.6	8.4
0°-40°	408.2	14.2	13.8
0°-60°	705.3	24.5	23.9
0°-90°	885.4	30.8	30.0
90°-120°	667.7	23.2	22.6
90°-150°	1607.7	55.9	54.5
90°-180°	1992.0	69.2	67.5
0°-180°	2877.1	100.0	97.5

CANDELA DISTRIBUTION:

	0°	22.5°	45°	67.5°	90°	Flux
0°	313	313	313	313	313	
5°	315	312	312	313	310	30
15°	302	301	305	310	310	85
25°	275	278	287	298	300	127
35°	236	242	257	270	272	147
45°	188	195	212	221	222	145
55°	137	144	156	163	163	122
65°	89	93	102	106	107	88
75°	48	48	55	59	60	51
85°	12	14	20	24	26	14
90°	0	8	21	32	36	1
95°	20	74	95	108	112	25
105°	102	176	271	296	300	108
115°	186	245	343	420	445	183
125°	262	308	388	450	475	234
135°	327	359	429	476	494	252
145°	380	398	446	488	504	238
155°	422	430	455	480	490	194
165°	448	449	458	466	471	127
175°	464	460	460	459	459	44
180°	460	460	460	460	460	



TEST NUMBER: 26363

CATALOG NUMBER: I2-WL-1T8-1C-UNV-04

CANDELA DISTRIBUTION (FULL):

	0°	22.5°	45°	67.5°	90°
0°	312.6	312.6	312.6	312.6	312.6
2.5°	316.0	313.1	312.0	312.9	311.2
5°	314.9	312.0	311.6	312.7	309.9
7.5°	313.0	310.8	311.0	312.3	310.7
10°	309.7	308.2	309.4	311.8	310.8
12.5°	306.1	305.0	307.1	311.5	310.6
15°	301.5	301.1	304.7	310.3	310.0
17.5°	296.1	296.4	301.6	307.9	308.5
20°	290.0	291.1	297.6	305.3	306.2
22.5°	282.9	285.0	292.9	302.0	303.5
25°	275.0	278.0	287.4	298.0	300.5
27.5°	266.4	270.3	281.1	293.4	295.7
30°	257.0	261.5	273.7	287.1	289.5
32.5°	246.7	251.9	265.5	279.0	281.4
35°	235.8	241.7	257.0	269.9	271.9
37.5°	224.4	230.8	247.0	259.5	261.5
40°	212.7	219.4	235.9	247.7	249.4
42.5°	200.4	207.5	223.9	234.9	236.4
45°	187.8	194.9	211.5	221.1	222.4
47.5°	174.9	182.0	197.9	206.7	207.3
50°	162.2	169.4	184.1	192.3	192.6
52.5°	149.4	156.4	170.5	177.7	177.7
55°	136.6	143.5	156.3	162.7	163.0
57.5°	124.1	130.3	141.9	147.5	148.2
60°	111.9	117.6	128.2	133.1	133.9
62.5°	100.0	105.0	114.8	119.6	120.6
65°	88.8	92.8	101.7	106.4	107.4
67.5°	77.9	81.0	88.9	93.6	94.2
70°	67.6	69.6	76.8	81.3	82.2
72.5°	57.6	58.8	65.4	69.9	70.8
75°	48.4	48.3	54.6	59.1	60.3
77.5°	39.1	38.3	44.4	48.7	50.1
80°	29.9	29.2	35.2	39.5	40.9
82.5°	21.0	21.2	27.1	31.5	33.1
85°	12.5	14.2	20.2	24.4	26.0
87.5°	4.7	8.6	14.2	18.2	19.7
90°	0.0	7.6	21.0	31.7	35.8
92.5°	5.3	34.1	53.1	67.0	71.1
95°	20.3	73.9	94.8	107.7	112.1
97.5°	38.8	114.5	139.1	152.7	157.2
100°	59.0	142.3	185.6	200.8	202.9
102.5°	80.5	159.4	230.5	248.7	254.2
105°	102.5	175.6	270.9	295.5	300.4
107.5°	123.8	190.7	301.1	340.6	348.4
110°	144.9	208.5	317.4	378.8	389.0



TEST NUMBER: 26363

CATALOG NUMBER: I2-WL-1T8-1C-UNV-04

CANDELA DISTRIBUTION (continued):

	0°	22.5°	45°	67.5°	90°
112.5°	165.4	226.6	330.0	405.5	425.5
115°	185.7	245.1	342.6	420.2	444.6
117.5°	205.4	262.6	353.1	428.4	457.2
120°	225.0	278.5	363.3	437.4	463.6
122.5°	243.6	293.6	375.9	444.3	470.5
125°	261.7	308.1	387.5	449.6	475.2
127.5°	279.4	321.7	400.2	455.7	478.8
130°	295.6	335.2	411.3	463.3	483.7
132.5°	311.5	346.4	421.8	470.0	489.0
135°	326.9	358.6	429.3	476.5	494.5
137.5°	341.9	367.0	434.7	481.5	499.6
140°	355.5	376.9	438.3	485.8	502.3
142.5°	367.7	387.5	442.9	486.1	501.1
145°	380.4	397.8	446.3	487.5	504.3
147.5°	391.4	407.4	450.9	486.4	501.4
150°	402.3	415.3	453.2	485.5	498.2
152.5°	412.3	422.8	454.5	482.9	493.9
155°	421.6	429.5	455.4	480.0	489.9
157.5°	429.2	435.0	455.6	475.0	484.7
160°	436.7	440.0	457.6	471.6	479.3
162.5°	443.0	444.4	457.9	468.6	474.3
165°	448.3	448.6	458.2	466.3	470.6
167.5°	454.1	452.5	459.2	463.4	467.3
170°	458.3	455.9	458.5	460.8	464.0
172.5°	461.2	458.7	459.4	459.4	462.0
175°	464.0	460.2	460.2	458.7	458.8
177.5°	465.0	461.0	460.0	457.7	458.5
180°	460.5	460.5	460.5	460.5	460.5

(END OF REPORT)